

500 series  
**DataMod**  
tool

# PROVIDING VISIBILITY TO YOUR PLANT PERFORMANCE

Date	Rate	Total	Reset	Accum
1/1/2018	1000.000	1000.000	0.000	1000.000
1/1/2018	2000.000	3000.000	0.000	3000.000
1/1/2018	3000.000	6000.000	0.000	6000.000
1/1/2018	4000.000	10000.000	0.000	10000.000
1/1/2018	5000.000	15000.000	0.000	15000.000
1/1/2018	6000.000	21000.000	0.000	21000.000
1/1/2018	7000.000	28000.000	0.000	28000.000
1/1/2018	8000.000	36000.000	0.000	36000.000
1/1/2018	9000.000	45000.000	0.000	45000.000
1/1/2018	10000.000	55000.000	0.000	55000.000

500-Series DataMod Tool Introduction

500 series  
**DataMod**  
tool

contrec

MEASUREMENT & CONTROL APPLICATIONS  
ACCURACY | QUALITY | PERFORMANCE

15-day  
**FREE TRIAL**

CONTREC – YOUR PROCESS PARTNER



# Contrec

## Engineered solutions for liquid assets (and more)

### Highly accurate field controllers for critical environments

This industry provides one of the most diverse and challenging environments for instrumentation to operate in. There are constantly changing demands and the need is to provide solutions that will not only return faultless reliability in the harshest operating conditions, but also deliver the high accuracy and performance expected when measuring valuable commodities.

Contrec has been taking care of oil and gas applications for over 30 years and was one of the first electronic preset controller manufacturers to gain custody transfer approvals for the loading of oil products onto road tankers, rail and barge applications.

The 515 Series is based on an advanced, flexible and reliable hardware platform, while the functionality is determined by software that is specifically tailored to individual applications. With over 50 applications already created and a wealth of available input types, our specialised features such as the ability to linearise the flowmeter in inputs, ensures Contrec continues to help make good flowmeters even better.

### Simple data extraction and report generation for your process variables

The Contrec DataMod Tool allows engineers and managers to quickly and easily keep up-to-date with what's happening in their plant. No need for expensive, customised SCADA packages. DataMod is a one-size-fits-all solution which allows you to extract critical live or logged operating data from your Contrec 515 instruments installed in the field and to generate reports and spreadsheets quickly and easily.

In Batch or Load applications, DataMod can continually monitor the 515 controller and allow managers of single standalone systems to automatically generate and print a default or customised report (Delivery Docket) at the end of a delivery. This becomes a highly economical and efficient way to generate accurate and professional reports on the computer's existing office printer. For Load applications, Bill of Lading style report templates are provided as part of the standard DataMod install.

In Process Control or Flow Measurement applications, engineers can monitor various flows; whether it's liquids, steam or gas in the boiler house, fuel loading into tankers or effluent discharge from factories. Key information such as volume, mass, temperature, pressure, density, energy, power can all be accessed and scrutinised to ensure the production process is operating at optimum levels. The data can additionally be used to highlight potential problems on site. For example, where reduction in flow rates could be the result of a failing pump or sticking valve. This information can help save considerable costs in preventing serious equipment failure and lost production.

#### Key features:

- Inbuilt Modbus TCP/IP Protocol
- Collect logged data from 515 instruments installed in the field
- Display collected process data
- Generate PDF reports
- Automatically save and print reports for single standalone systems
- Produce data in CSV format commonly used in 3rd party software
- Customisable reports (special custom templates also available)
- Industry standard Modbus RTU communication
- Simple installation and configuration
- Software download from Contrec website
- Security and data integrity
- 15-day FREE TRIAL

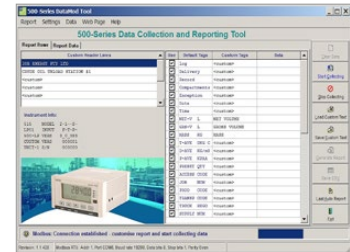
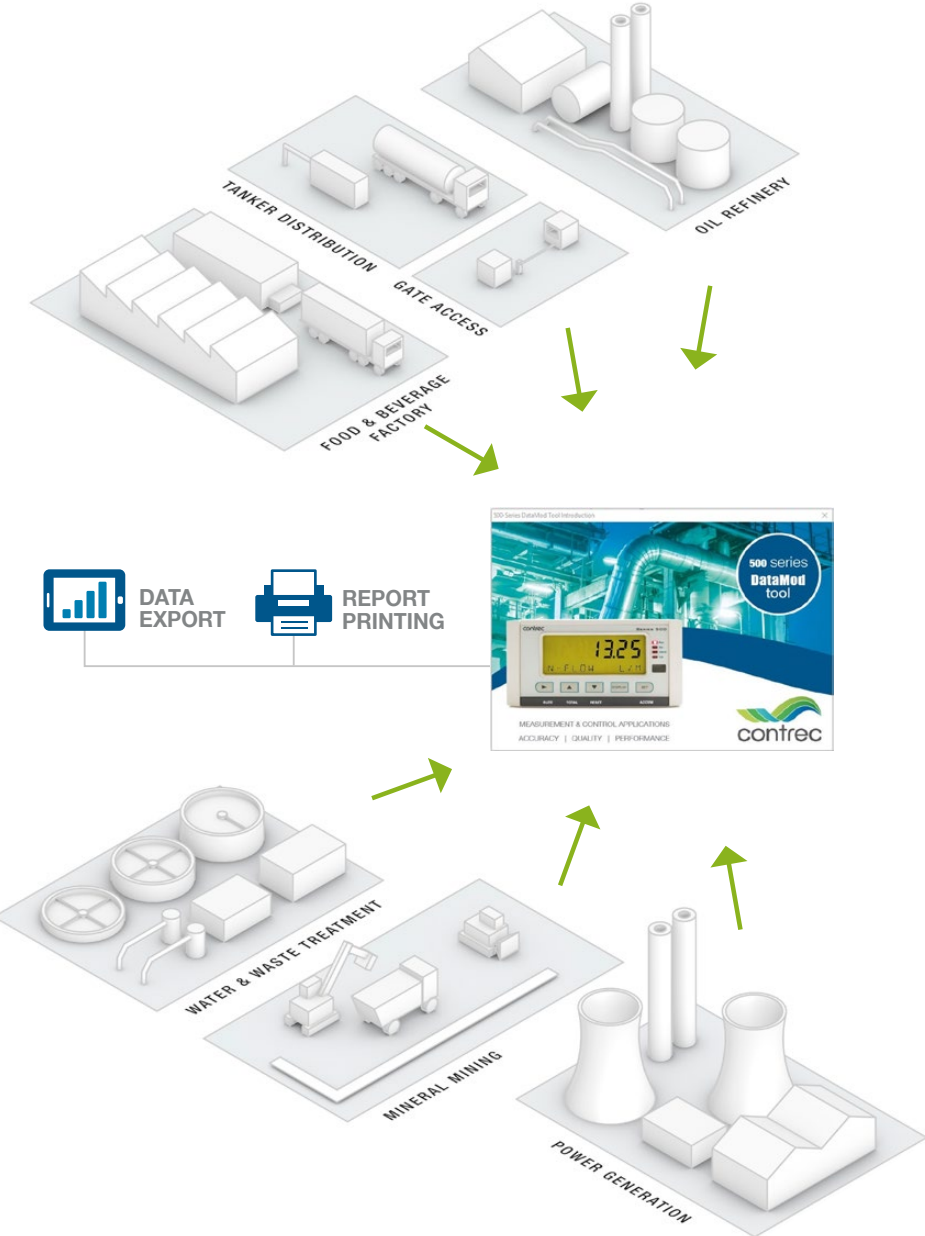
#### Applications:

- Single-point Load Controlling (load or unload)
- HVAC Facility Management (gas, steam, water, waste)
- Food & Beverage (batch control, ratio blending, dosing)
- Power Generation (oil, steam, compressed air)
- Oil & Gas (tanker loading, tank farms, additives, transfer)
- Marine (engine consumption, bunkering, safety systems)
- Nuclear (gas, cooling water, steam)
- Minerals and Mining (refuelling plant equipment, remote site access)

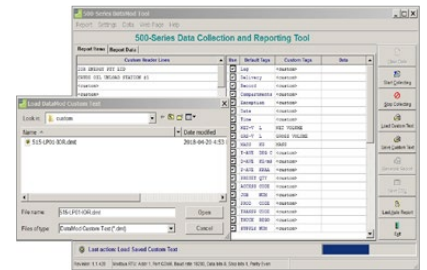


# See the Full Picture

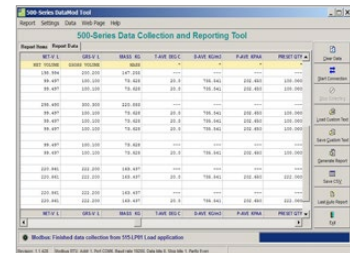
Managers are often required to produce regular reports on the performance of production facilities. These reports are vital for businesses to help control costs, plan effective production strategy and highlight potential problems. One example might be a steam boiler, installed several years earlier to handle the demand at that time. Over the years, production levels may have increased to such a degree that the boiler is now having to operate beyond its normal capability in order to keep up with demand. This increases the wear and reduces reliability of the boiler and also disproportionately increases the cost of gas supply needed to feed the boiler. Being able to track the steam usage in the plant, and pinpoint peaks and troughs, will allow managers to view the boiler's performance and make accurate, informed decisions on their capital expenditure.



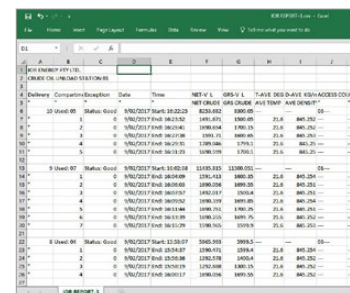
Connection and Variables Data Collection



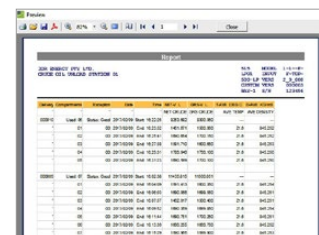
Load Custom Report Test



Collected Data Display

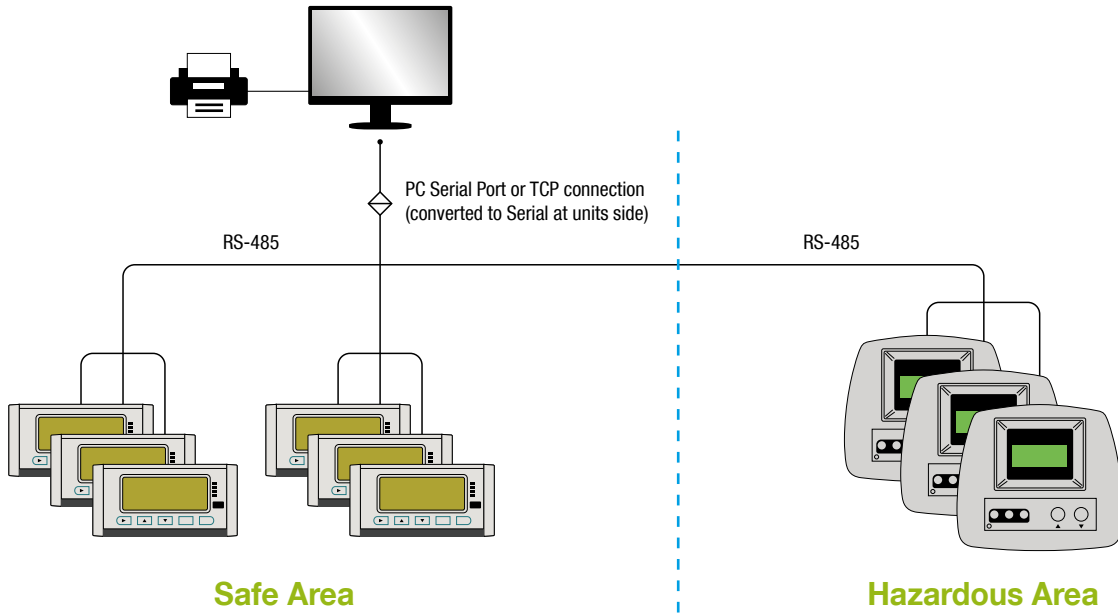


Export CSV File



PDF Report Preview

# Simple Networking Structure



## Systems Requirements

The 500 DataMod Tool has the following system requirements:

- Windows based Personal Computer
- 256MB Memory (or higher)
- 10MB available Hard Disk space
- Display Resolution 1024 x 768 minimum
- Serial Communications Port or TCP/IP connection (requires serial to TCP/IP converter at the 515 instrument side)
- Microsoft Windows 7 (or higher), normal DPI setting
- PDF Reader, such as Adobe Acrobat Reader V4.0 or higher (to view/print generated reports)
- Internet access for periodic software verification

Note: The DataMod tool is compatible with 515 instruments with software versions starting from 2.9.080 (or 3.0.389 if Load application and auto-collecting is required).

DELIVERY REPORT (JOR ENERGY PTY LTD)	
<small>JOR ENERGY PTY LTD. 515 MODEL 1-1--P-</small> <small>EROMANGA CRUDE UNLOADING BAY 1201 IMPRO 3-20-</small> <small>500-LP VERS 3_0_002</small> <small>BS&amp;N: test done CUSTOM VERS 000006</small> <small>BAY-01 S/N 161214</small>	
TRANSACTION SUMMARY	
Log	00001
Delivery	000005
Record	00000100
Compartments	Used: 01
Exception	Status: Good
Date	2017/04/24
Time	Start: 18:56:37
ACCESS CODE	03--
JOB NUM	001835
SOURCE FIELD	14
TRANSP CODE	02
TRUCK REGO	TUQ327
SUPPLY NUM	030192
FLUID GROUP	2
T-BASE DEG C	15.0
D-BASE KG/m3	776.767
NET-V L	NET CRUDE 15108.125
GRS-V L	GRS CRUDE 15265.300
MASS KG	11735.487
COMPARTMENT DATA	
Record	00000101
Compartments	01
Exception	00
Date	2017/04/24
Time	End: 19:03:53
T-AVE DEG C	25.2
D-AVE KG/m3	788.769
PRESET QTY	0.000
NET-V L	NET CRUDE 15108.125
GRS-V L	GRS CRUDE 15265.300
MASS KG	11735.487
<small>Converted volumes corrected to reference conditions shown.</small> <small>Report generated by Contrec 500-DataMod software.</small> <small>24/04/2017 7:06:09 PM Page 1</small>	

### Sample of Custom Report

Please talk to your distributor about customer templates.



**Contrec Ltd**  
Riverside, Canal Road  
Sowerby Bridge  
West Yorkshire HX6 2AY

**t** +44 (0)1422 829944  
**f** +44 (0)1422 829945  
**e** sales@contrec.co.uk  
**w** www.contrec.co.uk

**SALES & TECHNICAL SUPPORT:**  
**+44 (0)1422 829944**  
**www.contrec.co.uk**

**Contrec Ltd**  
European, Middle East and Africa Sales:  
+44 (0)1422 829944  
sales@contrec.co.uk

**Contrec USA LLC**  
Americas & Canada Sales:  
+1 (0)205 685 3000  
customerservice@contrec-usa.com

**Contrec Systems PTY Ltd**  
Australasia Sales and South East Asia  
Support: +61 (0)413 505 114  
paul@contrec.com.au

